

# Locking down Exchange Server: Securing the client

**E-mail Security Webcast Series: Part 3 of 5**

**Speaker: Lee Benjamin**



**LeeB@ExchangeGuy.com**

# Full Outlook remote options

- **Outlook Web Access**

- No Offline capabilities

- **Outlook Native MAPI**

- Port 135 RPC and other Ports Open on Firewall
- Bad Idea!!

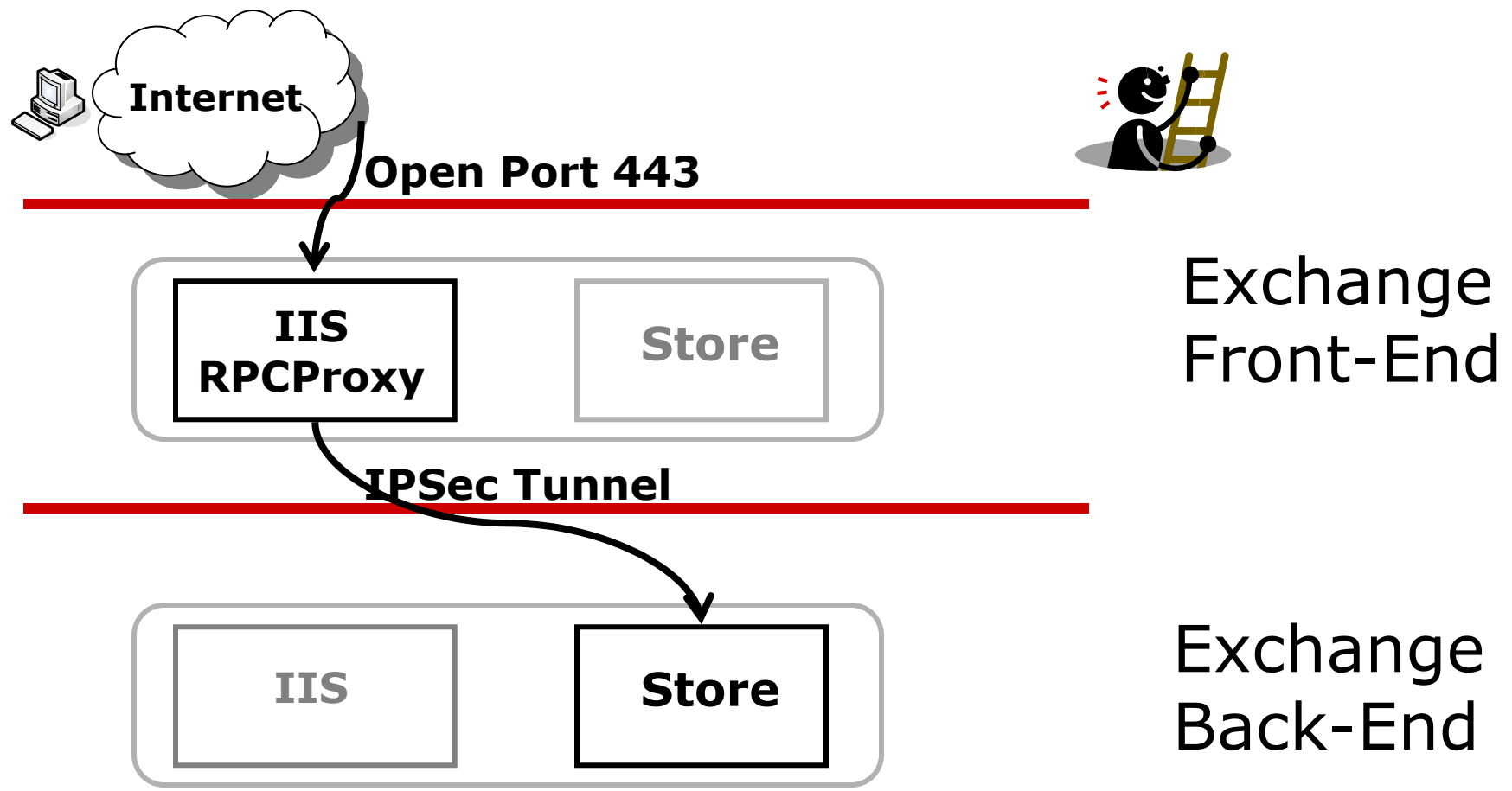
- **Outlook Over VPN**

- For Larger Organizations
- Use Cache Mode For Better Experience

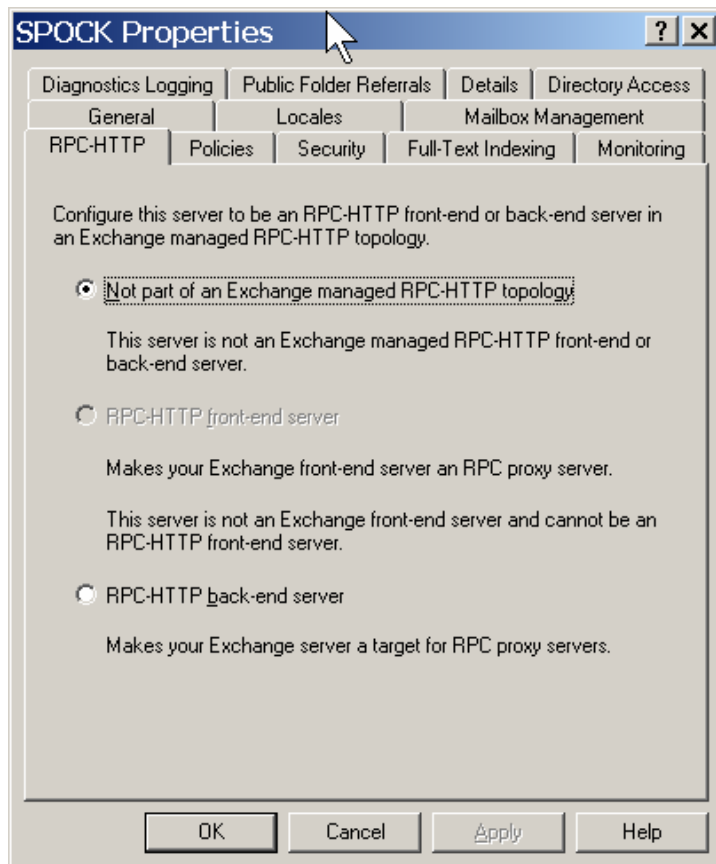
- **RPC over HTTPs...**

- Encapsulate MAPI/RPC in Port 443 HTTPS

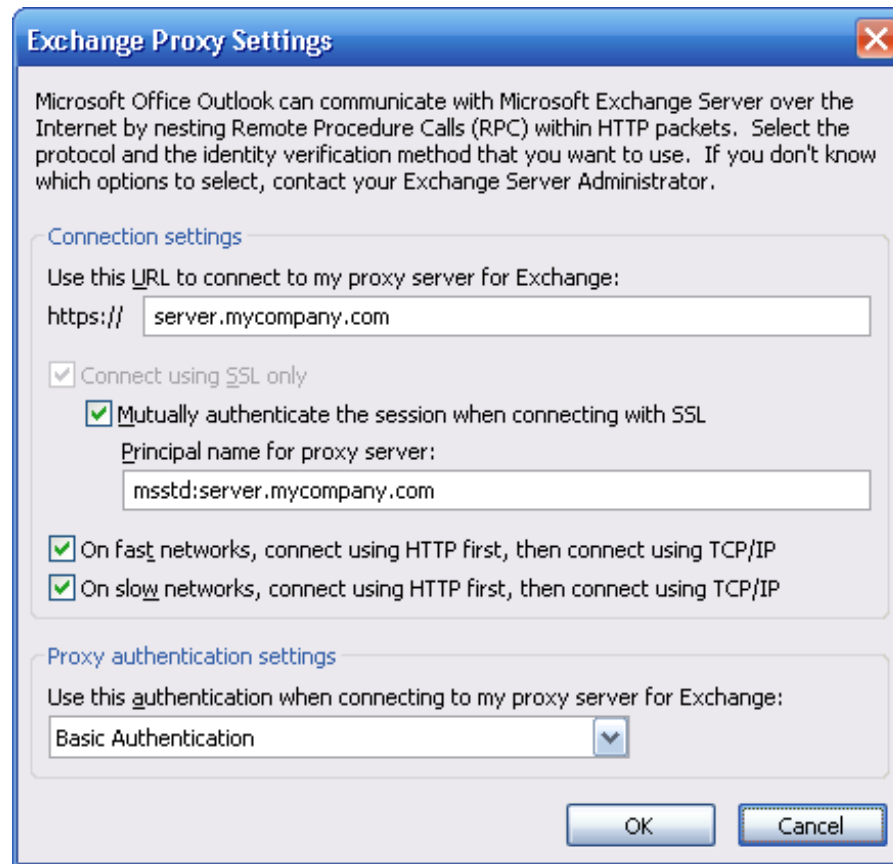
# Opening ports: RPC over HTTPs



# RPC over HTTPS configuration



Exchange 2003



Outlook 2003

# Outlook Junk-Mail Filter

- Remove Unwanted Messages from Inbox
- Same Technology as Hotmail and Exchange Intelligent Message Filter
- Updates Every Couple of Months

# Beacon Blocking

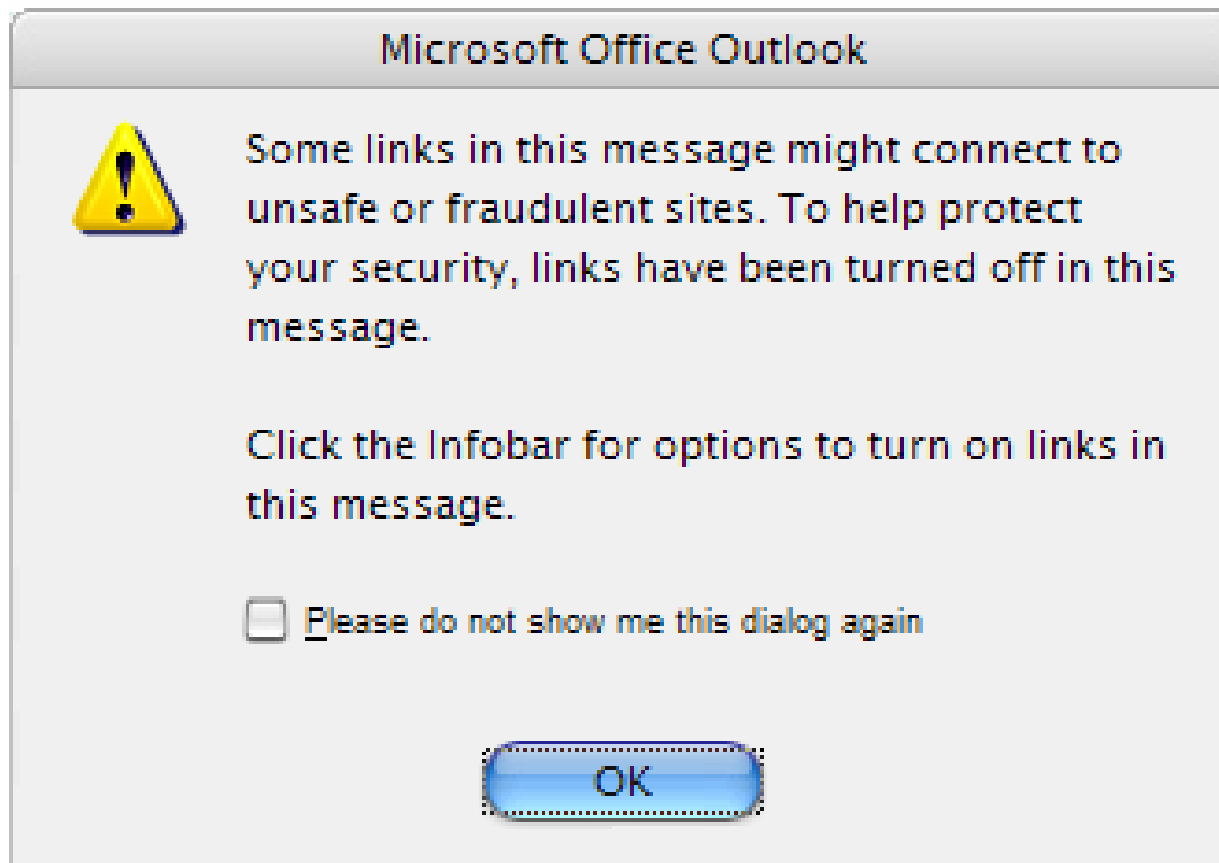
- **Spammer Wants to Know What?**
  - That You Are Alive.
- **Spammer Sends HTML Message With Image**
- **Image Not Included**
  - Instead a Link Back to Spammer Server
  - Link includes Path to Image
  - And Unique ID Tied to Your Email Address
- **Request the Image and Spammer Got You**
- **Outlook 2003 and Outlook Web Access 2003  
Protect Against This (Outlook Express Too)**

*"To help protect your privacy, Outlook prevented automatic download of some pictures in this message."*

- ***Phishing Protection in SP2 (URL does not match)***



# New: Anti-Phishing Protection Office 2003 Service Pack 2



# Resources

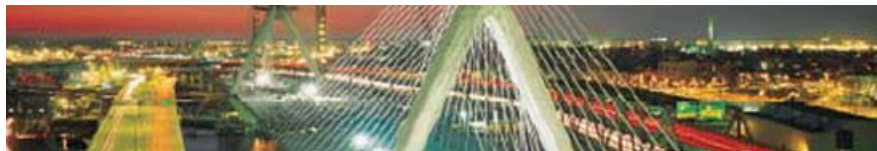
- **Exchange Team Blog**
  - <http://blogs.technet.com/exchange>
- **Exchange Best Practices Analyzer**
  - <http://www.exbpa.com>
- **Exchange Server 2003 Technical Documentation Library**
  - <http://www.microsoft.com/technet/prodtechnol/exchange/2003/library/default.msp>
  - Message Security Guide for Exchange Server 2003
  - Ten Additional Exchange Security Documents
- **Exchange Virtual Labs**
  - Web-based Access To Labs
- **Utilities and Add-On Products**
  - <http://www.Slipstick.com>
- **TechTarget Articles**
  - <http://www.SearchExchange.com>



Thanks!



**LeeB@ExchangeGuy.com**  
**www.ExchangeGuy.com**



**www.ExchangeServerBoston.com**